

CHESS TACTICS

In this introductory lesson, we will discuss about:

- the importance of tactics and the initial instruction for the student's progress
- the chess board and importance of board visualization
- the forms of interaction between pieces
- some basic information about the importance of interactions

The game of chess is known to consist in 2 different parts: strategy and tactic, but which are, of course, strongly inter-connected. Some moves can be considered strategical moves (based on rules, principles, plans etc.) and others - tactical moves (which require a precise calculation of variations).

The percent between these 2 kinds of moves is considered to be around 65%-35% in favor of strategy. Of course, this ratio varies a lot in every game, function of opening system, methods of attack and defense and the players' style.

The player's tactical force depends in a large measure on the initial instruction.

This initial instruction plays a very important role to mould the player's mind for a high performance in chess.

There is a huge difference between the calculation force of a young grandmaster of 16 years and a club player with more than 30 years of practice. Where this difference comes from? It is 1% talent and 99% work, but GOOD work, that the young player done! Instead, the bad habits in the calculation process of the experimented club player keep him stuck on the same level for long time.

We will begin the instruction with the basic elements (presented in this lesson) as they are of the greatest importance for your initial training. Then, we will go to more and more complex elements. We will work to develop and improve your "calculation power", "tactical vision", "maximal thinking" and many other elements, all part of Tactics.

The chess game is played with pieces on a chess board. Even it looks simplistic, these 2 elements (BOARD and PIECES) should be known very well by every player who aspires for a high performance in chess.

The "good" thing is that the most players (even the "good tactical players") do not know even the chess board, not considering more complex elements as interaction about pieces. This is the good thing for us, bad thing for them.

Our student has to start his training in the "tactic" area with these 2 elements.

1) The Chess Board

Our student is advised to learn the chess board so well that he should be able to “see” it in his mind. He should be able to answer quickly without looking at the board to some questions as:

- How a knight from c4 can arrive at f6 through d3?
- Tell all the routes for a knight to go from d6 to f4 in minimum number of moves.
- Which are the squares where an h4-bishop can attack a queen on d6?
- Name the diagonals that intersect in c5, f4, h2.
- Name the color of the squares where the b1-h7 diagonal intersects the 4th rank.
....and so on.

At the end of the training, the student should be able to (re-)play a game only following/telling the moves (1.e4 e5 2.Nf3 Nc6 3.Bb5 a6 4.Ba4 etc.) without looking at the board.

In addition, after looking at a position for about 2-3 minutes, the student should be able to solve it in his mind.

This kind of training, so-called “board visualization”, should be taken in serious by any chess player, no matter his/her value. It is strongly recommended by strong tacticians like Kotov, Tal, and great chess teachers as Averbach, Shamkovic, Sveshnikov or Pavlov. Without a good mental picture of the chess board, the player will face serious problems when the position on the board becomes more complicated and he will probably become tired when the game last for more than 30 moves.

This training will help the player to see correctly more moves in advance, to clearly see the resulting positions with his “mind’s eye”, to observe much easier hidden resources, to avoid “blunders” and, finally, to improve his calculation power.

From the second month of our school, we will provide a specific training program with exercises and methods to train this capability. The training will last until the end of our course, but its final objective will be great for your chess.
The training will be separated on 2 levels of difficulty.

2) The Chess Pieces

If the chess board can and should be learnt in not a very long time, the pieces with their interactions, roles, cooperation, methods of play constitutes a very large and important part of the chess theory.

After our lesson on the quantitative value of pieces, you already should know their correct value during the opening-middlegame and, different, during the endgame. The aforementioned lesson also showed you the relative value of the pieces when the material on the board of the 2 players is not symmetric.

Interaction between pieces

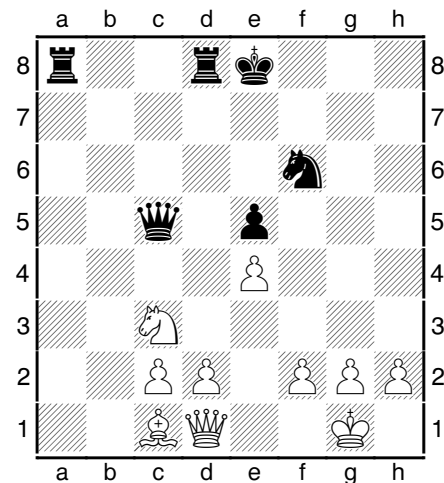
Another aspect, many players do not know is the forms of interaction between pieces. If you ask somebody about this (even most of your local chess teachers), the answer will be: “1.attack and 2.defense”. This is correct in percent of 40% and no more!

The interaction between pieces has 5 different forms:

1. **sustainment** (between allied pieces)
2. **protection** (between allied pieces)
3. **limitation** (between allied pieces)
4. **attack** (between opponent pieces)
5. **obstruction** (between opponent pieces)

We will refer to the position from the right, to give examples. We use a single name: “piece”, for both pieces and pawns.

W: Kg1, Qd1, Bc1, Nc3; c2, d2, e4, f2, g2, h2
 B: Kg8, Qc5, Ra8, Rd8, Nf6; e5



1. Sustainment = a piece defends or sustain another allied piece.

Ex a) the white queen defends the c1-bishop and the c2- and d2- pawns;

Ex b) the c3-knight defends the e4-pawn and the d1-queen;

Ex c) the d2-pawn defends the c3-knight.

2. Protection = a piece protects another allied piece by interposing.

Ex a) the white f2-, g2- and h2- pawns protect the white king (the f2-pawn protects the king from the attack of the black queen on the a7-g1 diagonal);

Ex b) the d1-queen is protected against the attack of the d8-rook by the d2-pawn;

Ex c) the e4-pawn protects the g2-pawn on the a8-h1 diagonal... and so on.

3. Limitation = a piece restricts the ray of action of another allied piece.

Ex a) the white pieces limit the queen’s possible moves to only 6 squares.

Ex b) the black king limits the movement of the d8-rook, so this cannot move on e8, f8, g8, or h8.

Ex c) the d2-pawn limits the mobility of the c1-bishop.

Ex d) the black e5-pawn limits the mobility of the black queen on the 5th rank to only 3 squares.

4. Attack = a piece attack an opponent piece.

Ex a) the black d8-rook attacks the d2-pawn

Ex b) the f6-knight attacks the e4-pawn

Ex c) no white piece attack a black piece

5. Obstruction = a piece limits the movement of an opponent piece.

Ex a) the a8-rook hinders white c1-bishop to go on a3

Ex b) the c5-queen pins the f2-pawn which cannot advance

Ex c) the e4-pawn blocks the black e5-pawn which cannot advance, and vice-versa

Ex d) the d8-rook bothers white d2-pawn to exert his right of defense for the c3-knight (because of the unprotected white queen on d1) – so, if Black is to move, he can take a knight by Qc5xc3

Ex e) the d1-queen limits the mobility of the black knight (by controlling the g4- and h5-squares)

All these interactions between pieces change at every new move on the chess board. The **consequences (CQS)** of the moves and their recording on our minds for an immediate or later usage in the game have very big importance for our “tactical thinking” (see the set of exercises about the CQS of the moves).

Explanations and tips about the forms of piece interactions

The attack

The attack is a very well known form of interaction, so we won't insist on it. However, you should know that the attack can take more forms (simple attack, double attack, triple attack, discovered check, double strike and so on). For less trained students in the field of tactics, we highly recommend a book with tactical exercises (combinations) in order to learn and exercise the forms of attack.

The defense (sustainment)

Against an attack, we should talk now about the defense. This form of interaction is very well known, but associated especially with the sustainment (“My opponent has attacked my knight with the queen. I will defend my knight”). However, the defense can take more forms and at least one of them is underestimated.

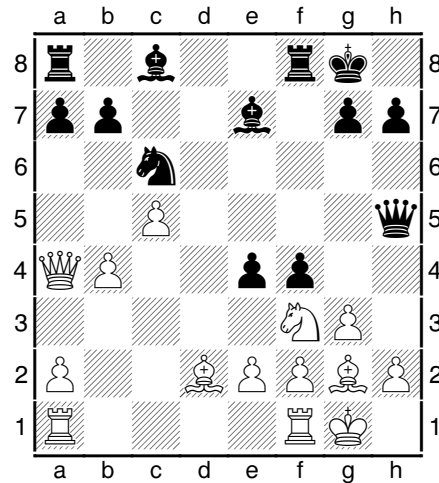
Without taking into account actions against the attacking piece (as capture or pinning), there are 4 forms of defense against an attack:

1. the attacked piece moves away
2. the attacked piece is sustained (defended) - *sustainment*
3. an allied piece protects the attacked piece by interposing - *protection*
4. the counter-attack: an opponent piece is attacked at the next move

Even if some of you might consider this fragment too basic, it's not at all so! During a chess game, the player's mind has to be prepared to take all the possibilities into account in a fraction of second.

In the position from the right, the white knight is attacked and a "normal" movement away will leave the white king in danger.

The candidate moves that White should take into account in this position must include the counter-attacking move: 1.b5! This move is nothing more than a simple defensive action.



1.?

The protection

The pieces of the same army can protect each other by interposing. Of course, the best protection is offered by the pawns which are of the lowest value. A protection made with pieces (not pawns) is not the best because this form of defense reduces the qualitative value of the pieces.

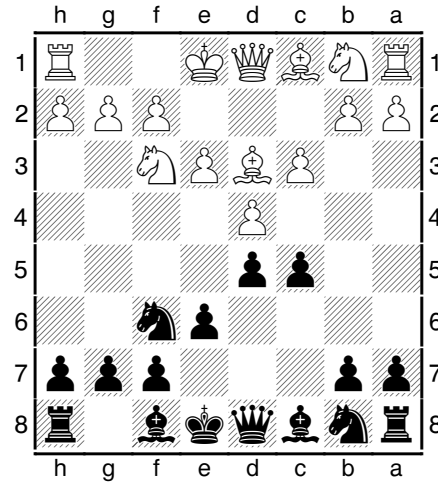
The king is the only piece which cannot be sustained (defended) against an attack (check) and this is why the protection of the king (usually assured by the pawns) is very important. After castling, the king enters a zone where the own pawns are less important in the fight for the centre and space, so they are usually intact, in their initial position. Who said chess is not extremely logical?!

In the case of the king, the pawns can also limit the monarch's moves so when there are open files and major pieces are threatening to enter the back-rank, the king's pawns should move (h2-h3 / h7-h6 or g2-g3 / g7-g6) to create a "window" for the king.

The limitation

In this position (given in the first set of exercises for the consequences of the moves), we were asked which move is better for Black: 1...Nbd7 or 1...Nc6.

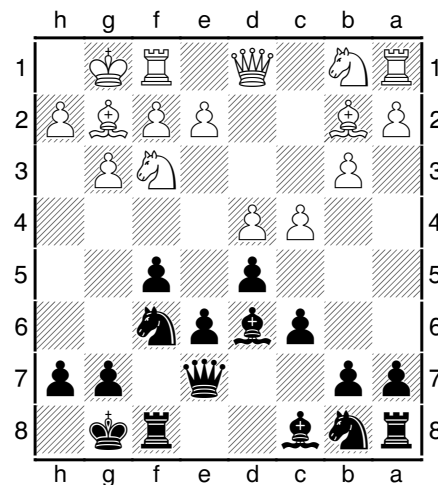
Even if you don't know the best plan for Black in this opening system, you should opt for 1...Nc6 for the simple reason that the knight doesn't block (see "limitation") the diagonal of the c8-bishop. Some moves later on, by continuing the game, you will realize that a good plan is Qd8-c7 and e6-e5 fighting for the centre and initiative. At that time, you will know that the knight would be better on c6, than on d7 because your light-square bishop will be free.



While between allied pieces, the sustainment and protection are good types of interaction, the limitation is a bad one.

We have to observe that the limitation made by a piece is usually temporarily (assuming that piece can move). However, the limitation of the pieces by the own pawns has usually a long-term effect. The pawns cannot move forth and back as the pieces, but their movement implies important consequences that cannot be redressed. Also, the pawns can be blocked by the opponent pieces and pawns. The most known result is the "bad" bishop which is limited by the own pawns blocked on the same color with the bishop.

Almost every opening system has specific problems regarding the limitation of the pieces. Especially Black has to solve problems in the opening that include centre, space, king's safety, prevention of getting weaknesses and, as a result, a piece or more will be left suffering, blocked by the own pieces or pawns. After the player solved the most important problems and the majority of pieces are well placed, the player (as already said, usually Black) will try to solve the problems of those limited pieces, a step called "the second opening".



A good example is "Stonewall", where Black successfully secured the e4-square and also got some chances for an attack on the kingside. However, as you can see on the diagram from the right, the c8-bishop is strongly limited by the own pawns.

Black cannot hope for success without developing his queenside bishop and rook, so a second phase of development is needed. Black will plan to develop his bishop via c8-d7-e8-h5, or even better on b7 after moving b7-b6, and c6-c5.

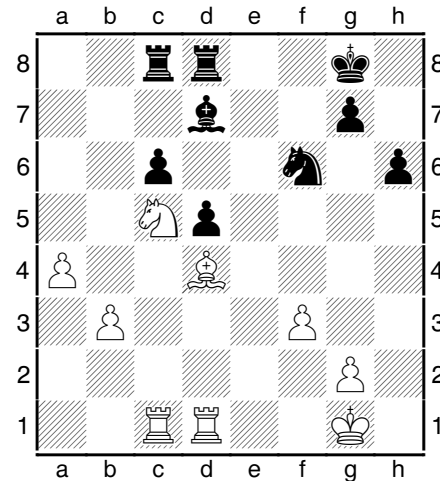
The obstruction

Obstruction of the opponent pieces is a form of interaction between pieces as attack and defense, but it is used almost only intuitively and at a low value by nearly everyone. The simplest usage of obstruction is often used in defense, when for example one hampers some opponent piece to come in a decisive attacking position.

The obstruction is realized by the own pieces which attack or control some important squares where the opponent pieces can move. This way, we avoid the activation of opponent pieces, try to get them out of play or, at least, we fight against their good collaboration. In his high level of usage, obstruction is known as “prophylaxis”.

An important form of obstruction is the blockade: by blocking one or more opponent pawns, the enemy pieces will be limited (the 3rd form of interaction) by their own pawns.

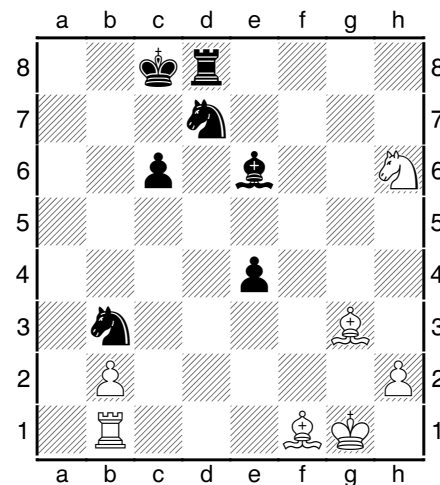
In the position from the right, White’s minor pieces obstruct the opponent pawns to advance by a strong blockade. In the meantime, white a- and b- pawns are free to advance. The black pawns limit the mobility of the bishop, rooks and even the knight. The black knight’s and bishop’s moves are also restricted by the white f3-pawn.



The pieces with long ray of action (Queen, Rook and Bishop) are excellent for obstructing the opponent pieces. The Queen and Rook are anyway the strong, major pieces, so let’s look at the power of bishops comparing with the knights.

The white g3-bishop obstructs the opponent king’s moves and mate can follow with the other bishop on a6.

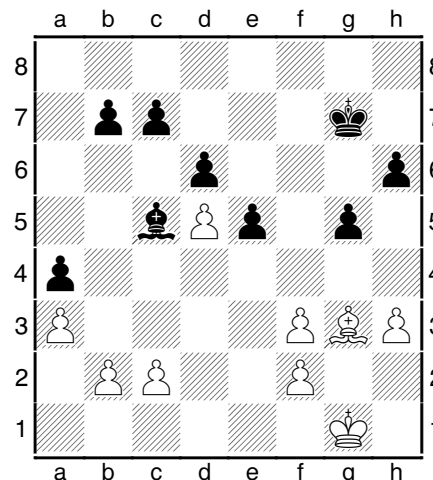
The black e6-bishop cuts the white knight at the edge of the board, taking from him all the escaping squares.



In this position, White's bishop is restricted by the black pawns. It is as black would have a piece up and Black can use it by attacking on the queenside.

The pawns and, therefore, the pawn-moves as well are of the first importance in the play for obstruction because of their small value against the big value of a piece. Also, the pawns play a very important role in limitation of the activity of the own pieces (the 3rd form of interaction).

These were only some basic examples for the importance of this form of interaction between pieces which is not enough known and used by many chess players.



Modern strong grandmasters include the obstruction of opponent pieces (together with the opponent's plans and threats) as a first priority in their technique of play. The obstruction of opponent's pieces is sometimes preferable (or should be treated with priority) than the activation of the own pieces. If some commercial books talk about "secret methods of play", "secrets of soviet chess" and other kind of "secrets", this technique of play can be categorized as such a secret, if you want. Of course, the real secret stays only in the understanding of position and this can be trained by study of theory and games, deep analysis and practice – this is the real "secret".

The mastering of the technique of obstruction is one of our aims at ICS. For now, you should know about the existence of this strategy in its simplest form of hampering the opponent pieces to get active positions.