



Monitoring of Infrastructure Impacts on Biodiversity:

Nam Ha National Protected Area

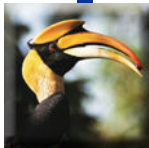
Ms. Latsamay Sylavong

IUCN Lao PDR Country Programme



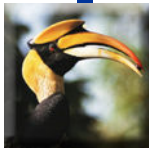
Presentation Overview

- Project location
- Broader context
- Objectives
- Components
- Outputs
- Follow up and sustainability



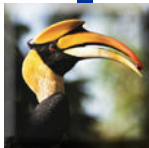
Background on Lao PDR

- Population of ~6 million, mostly rural
- Landlocked, relatively undeveloped
- Highest forest cover in SE Asia
- Rural populations highly dependent on natural resources
- Scientifically sound system of Protected Areas, with low capacity and insufficient funding for management



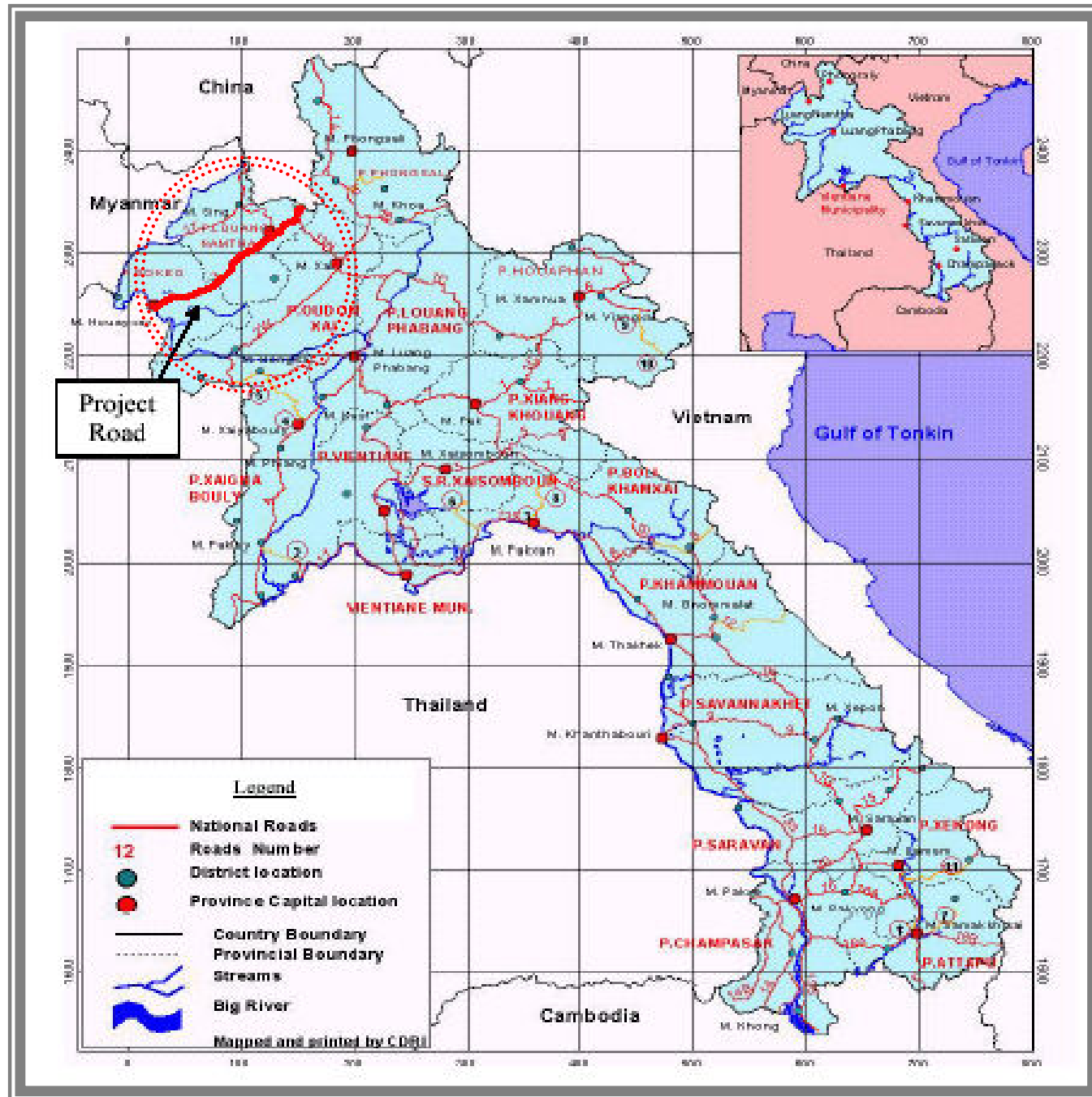
CBBIA project context

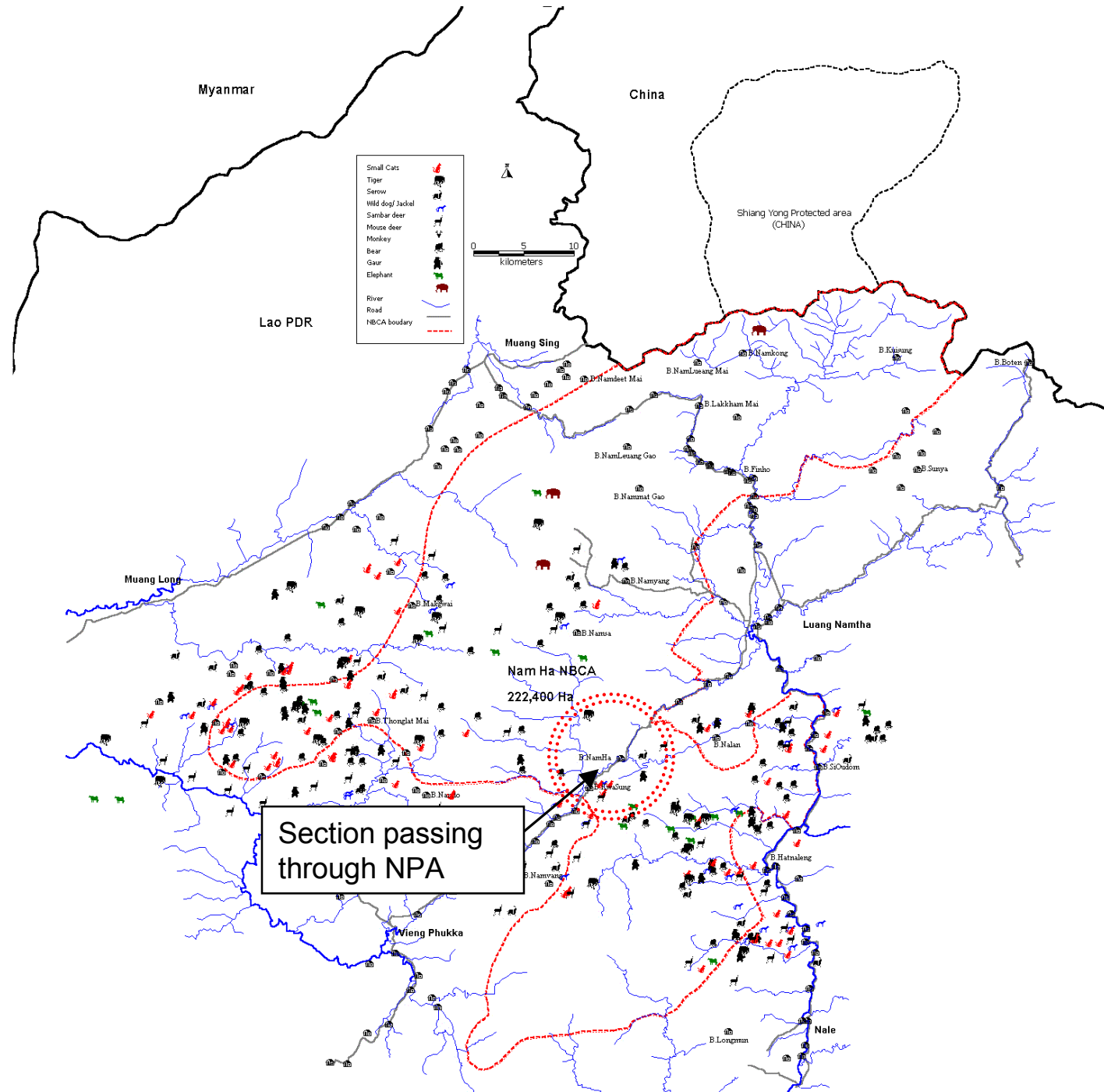
- IUCN Lao PDR engaged in building environmental monitoring capacity through a variety of projects
 - Rural Access Roads: Third party environmental monitoring for a series of feeder roads
 - Upper Mekong: Capacity building for livelihoods and biodiversity monitoring for area affected by Navigation Agreement
 - Northern Economic Corridor: Capacity building for environmental monitoring
- Also complements IUCN work on protected area management in Lao PDR



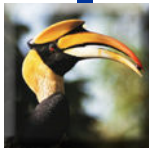
Background

- CBBIA project: supplement to IUCN work under the Northern Economic Corridor Project (NECP/R3)
 - Connect Kunming to Bangkok via Lao PDR
 - Construction in 3 sections: Chinese, ADB, Thai
- Contracted by the Lao Government to build capacity for Third Party Environmental Monitoring Services
- Primary focus under NECP/R3 is physical monitoring
 - Insufficient funds for long-term and biodiversity monitoring especially in and around Nam Ha NPA



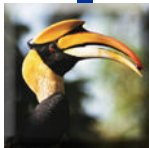


Section passing through NPA



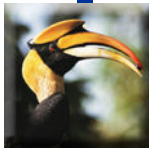
CBBIA project background

- NECP/R3 provides some plans for environmental monitoring in Nam Ha NPA
- In Lao PDR, different government agencies have responsibility for environmental monitoring and for PA management
- Need to expand training to cover PA managers, provincial officials
- Also broaden to include indirect impacts, such as increased wildlife trafficking and logging, and long-term considerations



CBBIA project objectives

1. Build capacity for natural resources planning and management at central, local and site levels
2. Train protected area staff and local officials in designing monitoring plans, analysing data, and reporting findings
3. Provide participants with knowledge to prepare and implement plan for monitoring the impacts of roads on nature and wildlife (biodiversity) during the construction period
4. Familiarise participants with main aspects of monitoring impacts of road use on nature and wildlife (biodiversity)
5. Train trainers from central level STEA and MAF staff to complete program in the future



CBBIA project components

Part 1: Background and context

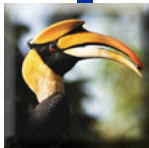
- settlements and roads;
- conservation assets in the province;
- impacts of infrastructure development on biodiversity;
- monitoring principles;
- monitoring framework



CBBIA project components

Part 2: Monitoring of direct impacts

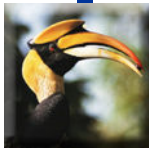
- selecting priority areas;
- impacts and mitigation measures;
- impact observations in the field;
- baselines, standards and indicators;
- monitoring procedures;
- data analysis and reporting



CBBIA project components

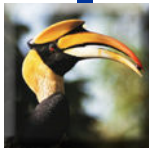
Part 3: Monitoring of indirect impacts

- impacts and mitigation measures;
- infrastructure-specific monitoring;
- monitoring in protected area management;
- sensitive issues (wildlife trafficking and logging)



CBBIA project outputs

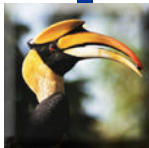
- Protected area staff and local officials are trained to monitor the biodiversity impacts of infrastructure projects in and around Nam Ha Protected Area, specifically those related to the construction of R3
- Data reporting techniques and formats for biodiversity impacts consistent among participants
- Revised training program for monitoring of infrastructure impacts on conservation values distributed to relevant stakeholders
- Key partners from the Central level are familiar with training program and able to share a leading role in the future



CBBIA project outputs

Specific outputs from the training course include:

- Checklist of conservation assets in Nam Tha and Bokeo Provinces prepared and mapped
- Threat potential of impacts from infrastructure development assessed by participants
- Monitoring plans prepared by participants, and tested in simulated monitoring exercise
- Lists of mitigation measures, baselines and indicators prepared by participants
- Observation checklist and monitoring report templates developed by participants



CBBIA project follow up and sustainability

- NECP/R3 project will continue monitoring and support in the area for 3 more years
- Training will be integrated into long-term curriculum design for protected area managers (national level)
- Central level participants will be encouraged to replicate training for other infrastructure projects in/around Protected Areas in Lao PDR